



# Wallmount Manual Dispenser – Bulk-Fill

## Foaming Hand Dispenser

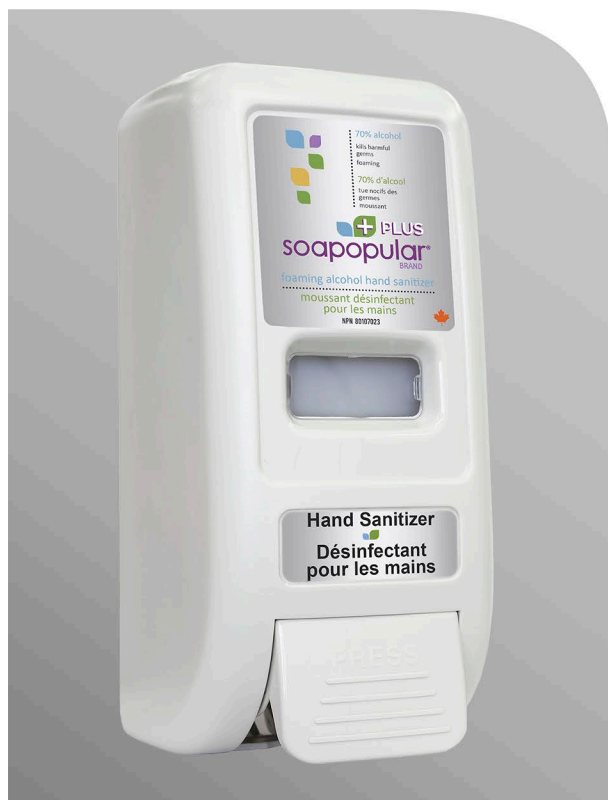
Prevent the spread of harmful germs & bacteria at the source by using our foam dispensers in your facilities. Offering 2,600 applications in-between refills, our dispenser provides consistent amounts of hand sanitizer where hand hygiene is needed.

## Highlights and Features

- Provides 2,600 applications in-between refills reducing maintenance trips required.
- Foam pump dispenses consistent & controlled amounts of formula to reduce mess.
- Reduce pilferage on site with a protective cover using a button-lock to restrict access to authorized personnel only.
- Light-weight and sleek design allows for easy installation using screws or adhesive tape.
- Our dispenser is fully ADA Compliant, meeting the standards of one-handed operation.

## Button-Lock Design

Our Manual Dispenser is designed with a button-lock mechanism located at the bottom of the unit to prevent theft and damage inside the product.



## Rich Foaming Formula

Foam offers 2.5x more applications per mL compared to gel and liquid alternatives.



## 2,600 Foam Applications

Our dispensers keep going, even through the busiest parts of the day with 2,600 applications.

Website: [www.soapopular.com](http://www.soapopular.com)  
E-mail: [info@soapopular.com](mailto:info@soapopular.com)

# Wallmount Dispenser Instructions Using Adhesive Tape

**Caution:** It is the installer's responsibility to ensure that installation of this unit complies with all applicable standards, codes, and regulatory requirements. Do not install this dispenser above sources of heat or near any sources of ignition/flame.

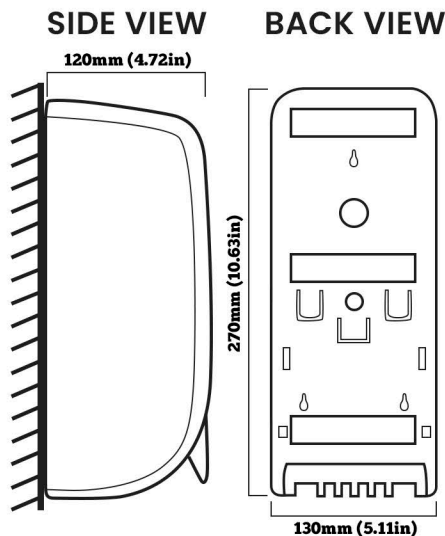
Mount unit only on dry, clean even wall parts or tiles. Do not install on moving furniture/objects (ie; doors) Do not install where the failure of mounting system, or dripping of product from hands may cause damage to equipment or create potential safety hazard.

Leave at least 2.00" of clearance above the wallplate to allow for easy bottle insertion & removal.

Wall anchors provided with the dispenser are to be used with masonry and drywall surfaces.

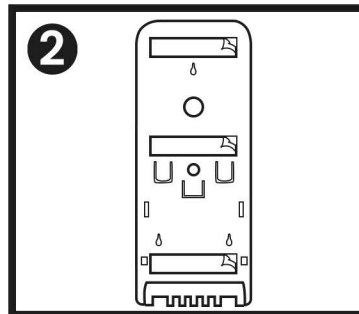
For surfaces other than masonry, the installer must use & select the appropriate fasteners. (i.e; zip plugs, and/or toggle bolts.)

## Wallplate Measurements



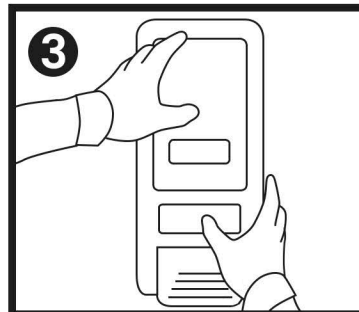
- 1 Only use a flat and smooth surface when you install the dispenser.

Thoroughly clean the area before installation, and let the area dry. **DO NOT** use brick or concrete surfaces with this mount method.



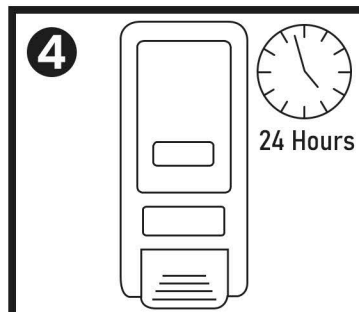
- 2 Peel the thin plastic cover protecting the tape on the back of the dispenser.

There are three long strips of double-sided adhesive tape on the backplate.



- 3 Place the dispenser on the clean flat surface and hold it for 10 seconds.

Continue to apply a firm pressure for 10 seconds.



- 4 **DO NOT** fill the dispenser with product until after 24 hours. This will allow the adhesion to solidify before weight is applied.

# Wallmount Dispenser Instructions

## Using Screws

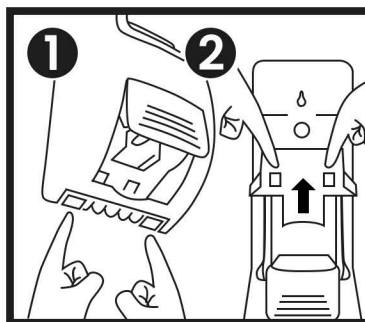
**Caution:** It is the installer's responsibility to ensure that installation of this unit complies with all applicable standards, codes, and regulatory requirements. Do not install this dispenser above sources of heat or near any sources of ignition/flame.

Mount unit only on dry, clean even wall parts or tiles. Do not install on moving furniture/objects (ie; doors) Do not install where the failure of mounting system, or dripping of product from hands may cause damage to equipment or create potential safety hazard.

Leave at least 2.00" of clearance above the wallplate to allow for easy bottle insertion & removal.

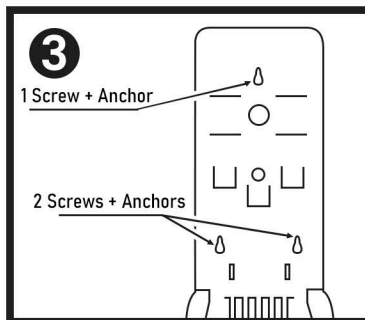
Wall anchors provided with the dispenser are to be used with masonry and drywall surfaces.

For surfaces other than masonry, the installer must use & select the appropriate fasteners. (i.e; zip plugs, and/or toggle bolts.)



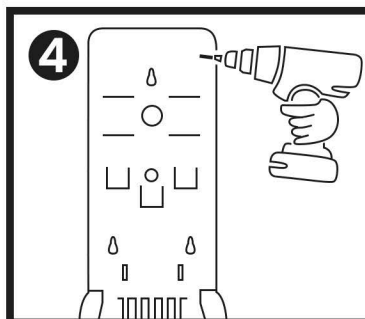
**1** Use the two buttons at the bottom of the dispenser to open the protective cover.

**2** Push the two tabs found on the backplate to release the mount that holds the bottle. Then slide the mount up to expose the 2 screw holes.



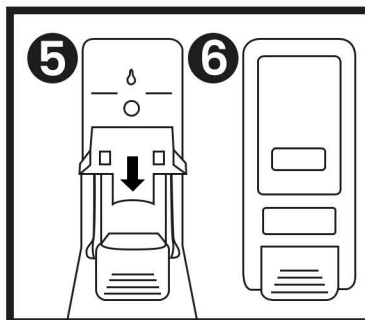
**3** The 3 provided screws and anchors will go in the screw holes on the backplate.

Ensure proper alignment of dispenser before using the screws.



**4** The provided anchors and screws are to be used with drywall and masonry type surfaces. Different screws and anchors are required for other surfaces.

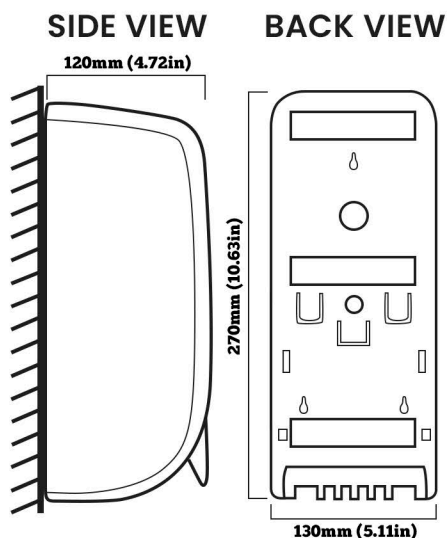
Use appropriate drill bit to mount the back plate to the wall.



**5** Put the bottle mount back in place by sliding it down against the backplate until it clicks into place.

**6** Close the protective cover to complete installation.

## Dispenser Measurements





# Technical Data & Specifications

## Setup & Refill Instructions

- 1 After the dispenser is installed against a flat surface, press the two buttons located on the bottom of the unit. This will open the cover.

- 2 Take out the dispenser bottle first before you refill it.

- 3 DO NOT refill the bottle while in the dispenser. Accidental drips or spills can damage/effect parts of the dispenser.

Recommended that you use a sterilized funnel when refilling the bottle. Remove the bottle cap and fill until the bottle is full.

- 4 Place the cap back onto the bottle and place it back into the dispenser.

Refer to Diagram.1 for proper bottle placement located at the top right of this page.

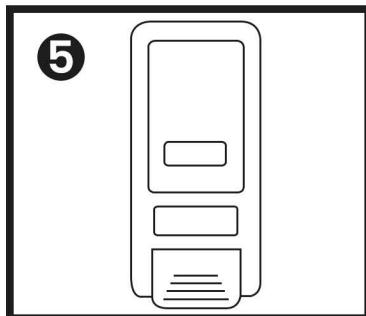
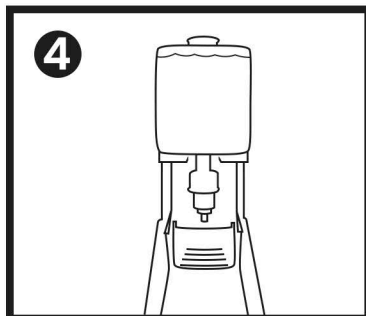
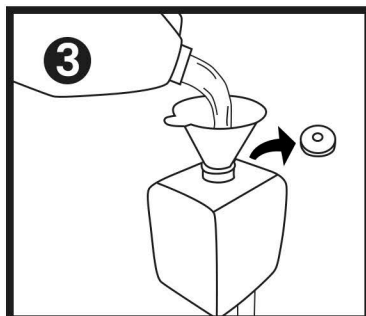
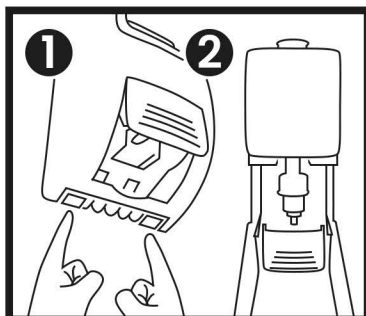
Align pump with Lower U-Shape slot as shown.

- 5 The protective cover can be closed by clicking it back into place.

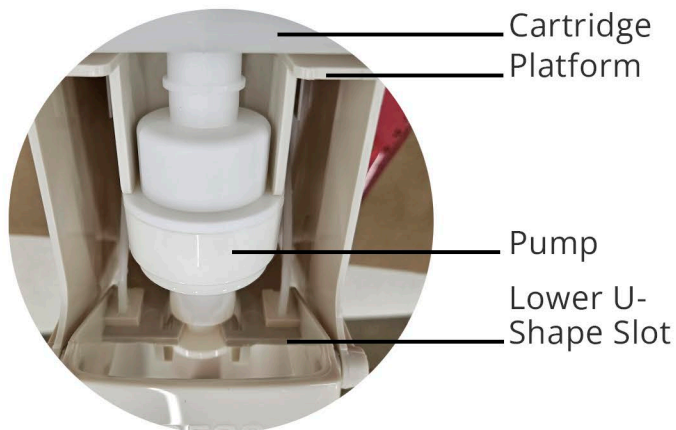
**\*PLEASE NOTE\***

Foam Tip & Dispenser Bottle can be purchased separately if part replacement is needed.

BOTTLE      FOAM TIP  
(68106-BL)   (68106-FM)



**DIAGRAM.1**



## Parts Included

Dispenser	( 1 )
Screw & Anchor	( 3 )
Double Sided Tape	( 3 )
InstructionSheet	( 1 )

## SPECIFICATIONS

Product Code:	57106
Num. of Applications:	2,600
Dispensed Formula:	Foam
Dispenser Capacity:	1,000mL (33.80 fl.oz)
Features:	Cost-Effective Refill Push Pump Activate

## TECHNICAL DATA

L x W x H:	5.11in x 4.72in x 10.63in
Disp Weight:	2.00 lbs.
Pieces per Pack:	1
Pieces per Pallet:	288
Application Type:	Manual

Website: [www.soapopular.com](http://www.soapopular.com)  
E-mail: [info@soapopular.com](mailto:info@soapopular.com)