



Wallmount Touchless Dispenser – Bulk-Fill

Foaming Hand Dispenser

Prevent the spread of harmful germs & bacteria at the source by using our foam dispensers in your facilities. Offering 2,600 applications in-between refills, our dispenser provides consistent amounts of hand sanitizer where hand hygiene is needed.

Highlights and Features

- Provides 2,600 applications in-between refills reducing maintenance trips required.
- Foam pump dispenses consistent & controlled amounts of formula to reduce mess.
- Reduce pilferage on site with a protective cover using a key-lock to restrict access to authorized personnel only.
- Touchless activation uses an infra-red sensor to automatically apply a controlled amount of foaming product.
- Our dispenser is fully ADA Compliant, meeting the standards of one-handed operation.

Key-Lock Design

Our automatic dispenser is equipped with a key to limit access to the inner dispenser to staff only.



Rich Foaming Formula

Foam offers 2.5x more applications per mL compared to gel and liquid alternatives.



2,600 Foam Applications

Our dispensers keep going, even through the busiest parts of the day with 2,600 applications.

Website: www.soapopular.com

E-mail: info@soapopular.com

Wallmount Dispenser Instructions Using Adhesive Tape

Caution: It is the installer's responsibility to ensure that installation of this unit complies with all applicable standards, codes, and regulatory requirements. Do not install this dispenser above sources of heat or near any sources of ignition/flame.

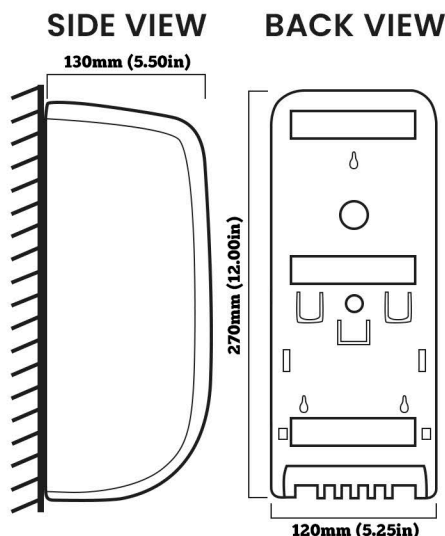
Mount unit only on dry, clean even wall parts or tiles. Do not install on moving furniture/objects (ie; doors) Do not install where the failure of mounting system, or dripping of product from hands may cause damage to equipment or create potential safety hazard.

Leave at least 2.00" of clearance above the wallplate to allow for easy bottle insertion & removal.

Wall anchors provided with the dispenser are to be used with masonry and drywall surfaces.

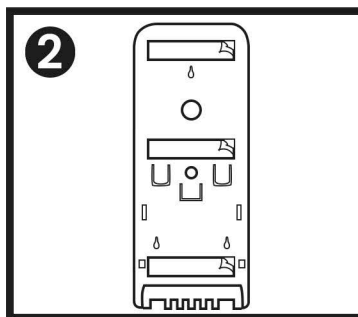
For surfaces other than masonry, the installer must use & select the appropriate fasteners. (i.e; zip plugs, and/or toggle bolts.)

Wallplate Measurements



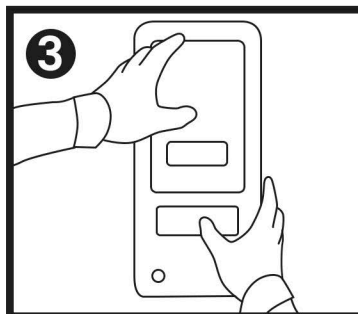
- 1 Only use a flat and smooth surface when you install the dispenser.

Thoroughly clean the area before installation, and let the area dry. **DO NOT** use brick or concrete surfaces with this mount method.



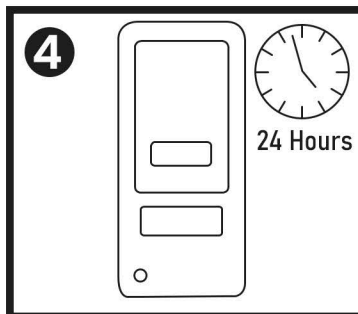
- 2 Peel the thin plastic cover protecting the tape on the back of the dispenser.

There are three long strips of double-sided adhesive tape on the backplate.



- 3 Place the dispenser on the clean flat surface and hold it for 10 seconds.

Continue to apply a firm pressure for 10 seconds.



- 4 **DO NOT** fill the dispenser with product until after 24 hours. This will allow the adhesion to solidify before weight is applied.

Wallmount Dispenser Instructions

Using Screws

Caution: It is the installer's responsibility to ensure that installation of this unit complies with all applicable standards, codes, and regulatory requirements. Do not install this dispenser above sources of heat or near any sources of ignition/flame.

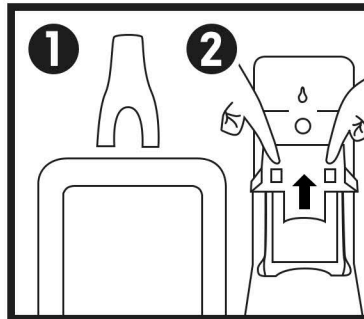
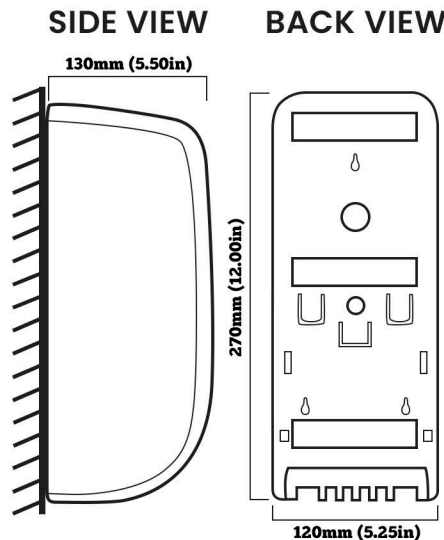
Mount unit only on dry, clean even wall parts or tiles. Do not install on moving furniture/objects (ie; doors) Do not install where the failure of mounting system, or dripping of product from hands may cause damage to equipment or create potential safety hazard.

Leave at least 2.00" of clearance above the wallplate to allow for easy bottle insertion & removal.

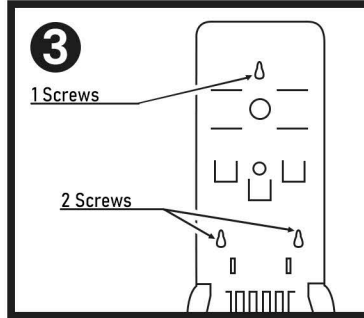
Wall anchors provided with the dispenser are to be used with masonry and drywall surfaces.

For surfaces other than masonry, the installer must use & select the appropriate fasteners. (i.e; zip plugs, and/or toggle bolts.)

Dispenser Measurements



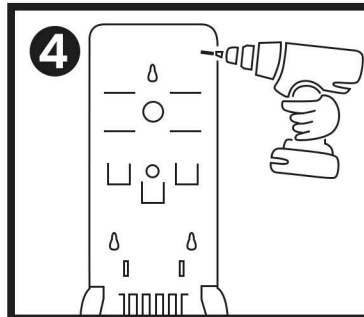
1 Open the protective cover using the provided key and apply pressure to the slots on top of the dispenser.



2 Push the two tabs found on the backplate to release the mount that holds the bottle. Then slide the mount up to expose the 2 screw holes.

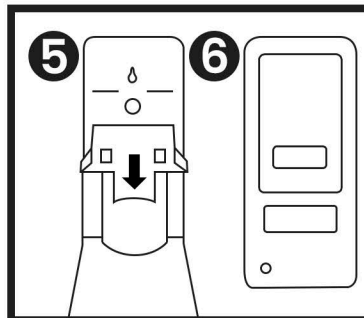
3 The 3 provided screws and anchors will go in the screw holes on the backplate.

Ensure proper alignment of dispenser before using the screws.



4 The provided anchors and screws are to be used with drywall and masonry type surfaces. Different screws and anchors are required for other surfaces.

Use appropriate drill bit to mount the back plate to the wall.



5 Put the bottle mount back in place by sliding it down against the backplate until it clicks into place.

6 Close the protective cover to complete installation.

Technical Data & Specifications

Setup & Refill Instructions

1 Use the dispenser key to open the front cover by applying pressure in the two slots on top of the dispenser.

2 Remove the bottle inside before refilling. DO NOT refill the bottle while it is inside the dispenser.

3 Remove the cap from on top of the bottle. We recommend using a funnel to refill the bottle to help prevent accidental spills.

Take the 4L refill jug and carefully pour contents into the bottle until full.

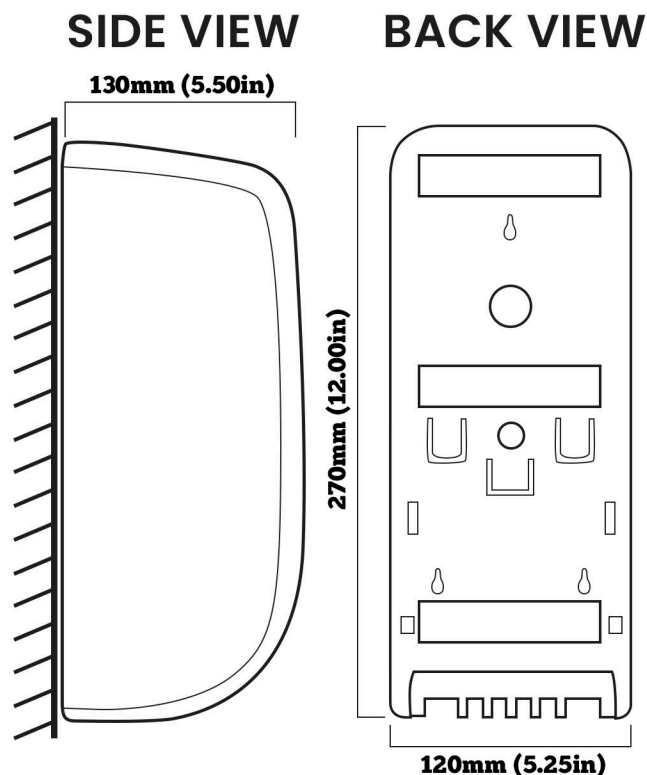
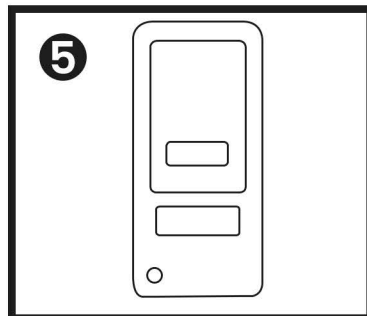
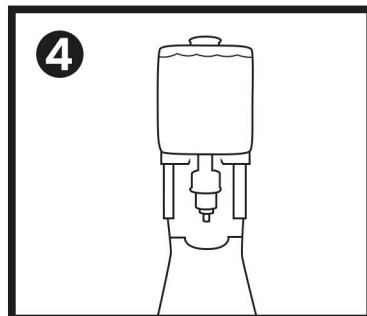
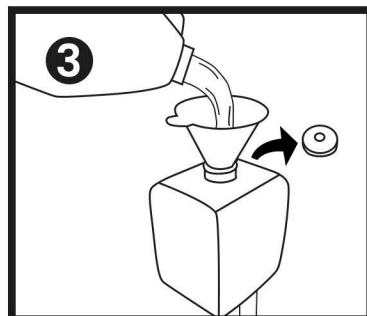
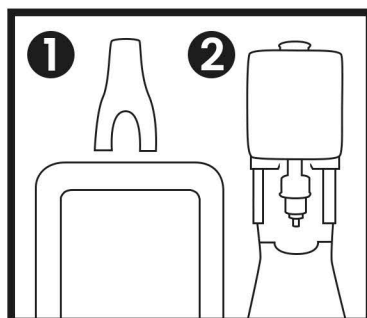
4 Put the cap back on the bottle. Put the full bottle back in the dispenser.

5 The protective cover can be closed by clicking it back into place.

PLEASE NOTE

Foam Tip & Dispenser Bottle can be purchased separately if part replacement is needed.

BOTTLE (68106-BL) FOAM TIP (68106-FM)



SPECIFICATIONS

Product Code:	57002-(W,S,B)
Num. of Applications:	2,600
Dispensed Formula:	Foam
Dispenser Capacity:	1,000mL (33.80 fl.oz)
Features:	Touchless Activation Protective Cover

TECHNICAL DATA

L x W x H:	5.25in x 5.50in x 12.00in
Disp Weight:	2.20 lbs.
Pieces per Pack:	1
Pieces per Pallet:	288
Application Type:	Automatic

Website: www.soapopular.com
E-mail: info@soapopular.com