



# Wallmount Manual Dispenser – No Cover

## Foaming Hand Dispenser

Prevent the spread of harmful germs & bacteria at the source by using our foam dispensers in your facilities. Offering 3,000 applications in-between refills, our dispenser provides consistent amounts of hand sanitizer where hand hygiene is needed.

## Highlights and Features

- Provides 3,000 applications in-between refills reducing downtime and maintenance.
- Foaming application is consistent and controlled to reduce messes and spills.
- Target high-traffic areas with our dispensers to reduce the spread and transmission of illness causing germs and bacteria at the source.
- Light-weight and easy to install using screws or adhesive tape for rapid implementation.
- Our dispenser is fully ADA Compliant, meeting the standards of one-handed operation.

## Clean-Tip Technology

Soapopular's No-Cover & Covered dispensers use our cartridge refill system, equipped with a foamer tip that pulls residual product back into the tip after every application to reduce wasteful leaks & spills.

## Consistent and Reliable



## Rich Foaming Formula

Foam offers 2.5x more applications per mL compared to gel and liquid alternatives.



## 3,000 Foam Applications

Our dispensers keep going, even through the busiest parts of the day with 3,000 applications.

Website: [www.soapopular.com](http://www.soapopular.com)

E-mail: [info@soapopular.com](mailto:info@soapopular.com)

# Wallmount Dispenser Instructions

## Using Adhesive Tape

**Caution:** It is the installer's responsibility to ensure that installation of this unit complies with all applicable standards, codes, and regulatory requirements. Do not install this dispenser above sources of heat or near any sources of ignition/flame.

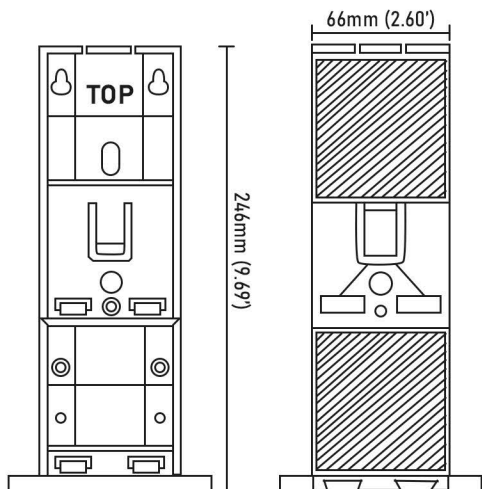
Mount unit only on dry, clean even wall parts or tiles. Do not install on moving furniture/objects (ie; doors) Do not install where the failure of mounting system, or dripping of product from hands may cause damage to equipment or create potential safety hazard.

Leave at least 2.00" of clearance above the wallplate to allow for easy bottle insertion & removal. Dispenser is dishwasher safe, top rack only, max water temp. 140F (60C).

Wall anchors provided with the dispenser are to be used with masonry surfaces such as brick, tiles, & concrete.

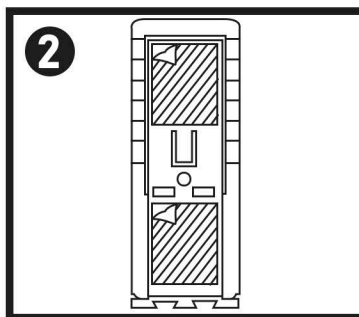
For surfaces other than masonry, the installer must use & select the appropriate fasteners. (i.e; zip plugs, and/or toggle bolts.)

## Wallplate Measurements



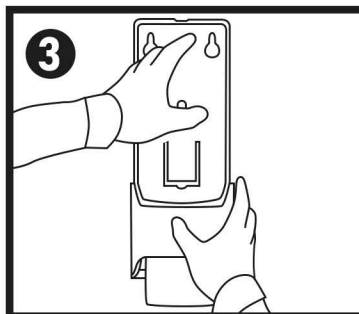
- 1 Use a flat, smooth surface to mount dispenser. First wipe the surface area with the included alcohol wipe.

Ensure a thorough clean of the surface & let the area dry. **DO NOT** use brick or concrete surfaces with this mounting method.



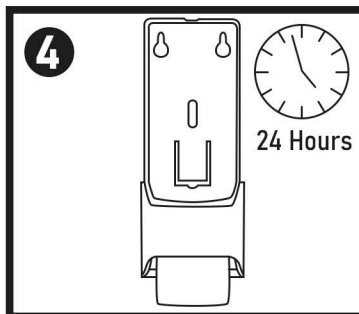
- 2 Located on the back of the dispenser, are two square adhesive's with thin covers.

Peel back the thin covers to expose adhesive material underneath.



- 3 Firmly press the dispenser against the flat surface in the same location that was cleaned with the alcohol wipe.

Continue to apply a firm pressure for 10 seconds.



- 4 **DO NOT** place cartridges in the dispenser until 24 hours have passed. This will allow the adhesive tape to solidify before weight is applied.

# Wallmount Dispenser Instructions

## Using Screws

**Caution:** It is the installer's responsibility to ensure that installation of this unit complies with all applicable standards, codes, and regulatory requirements. Do not install this dispenser above sources of heat or near any sources of ignition/flame.

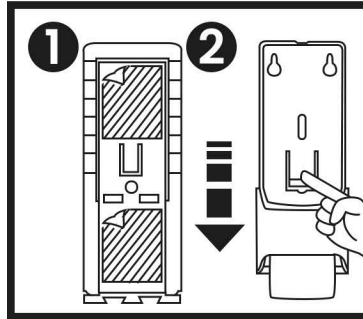
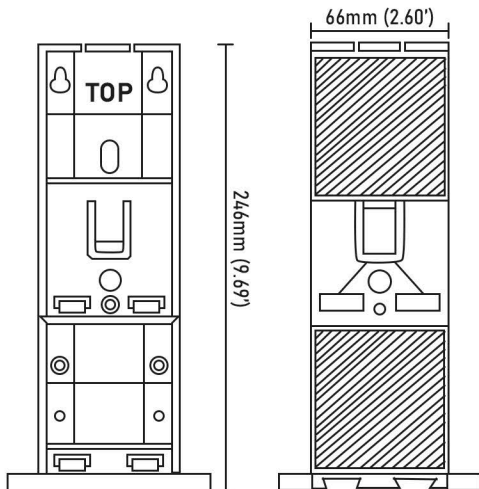
Mount unit only on dry, clean even wall parts or tiles. Do not install on moving furniture/objects (ie; doors) Do not install where the failure of mounting system, or dripping of product from hands may cause damage to equipment or create potential safety hazard.

Leave at least 2.00" of clearance above the wallplate to allow for easy bottle insertion & removal. Dispenser is dishwasher safe, top rack only, max water temp. 140F (60C).

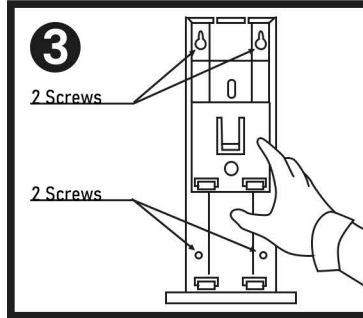
Wall anchors provided with the dispenser are to be used with masonry surfaces such as brick, tiles, & concrete.

For surfaces other than masonry, the installer must use & select the appropriate fasteners. (i.e; zip plugs, and/or toggle bolts.)

## Wallplate Measurements



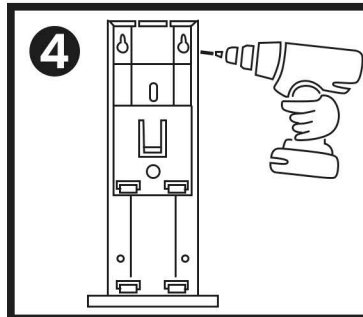
**1** Peel away the adhesive tap to expose the screw holes used in mounting the dispenser.



**2** Push the middle plastic tab to release the back-plate, then pull the plate from the dispenser.

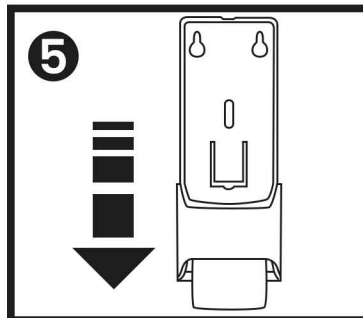
**3** Use the separated back plate as a guide to mark the screw location for proper alignment of the screws prior to drilling.

4 provided screws will go in the marked holes shown in the diagram.



**4** The provided screws are designed for use with drywall, tile, and brick surfaces.

Use a 3/16" drill bit to create the holes for the screws and anchors to use, then drill the screw into each wallplate hole.



**5** Now that the backplate is firmly secured against the wall, the dispenser part will slide down into place over the backplate.

The centre clip will click when the dispenser is properly into place.



# Technical Data & Specifications

## Setup & Refill Instructions

**1** Ensure proper mounting on a flat/smooth surface before the cartridge can safely be placed into the dispenser.

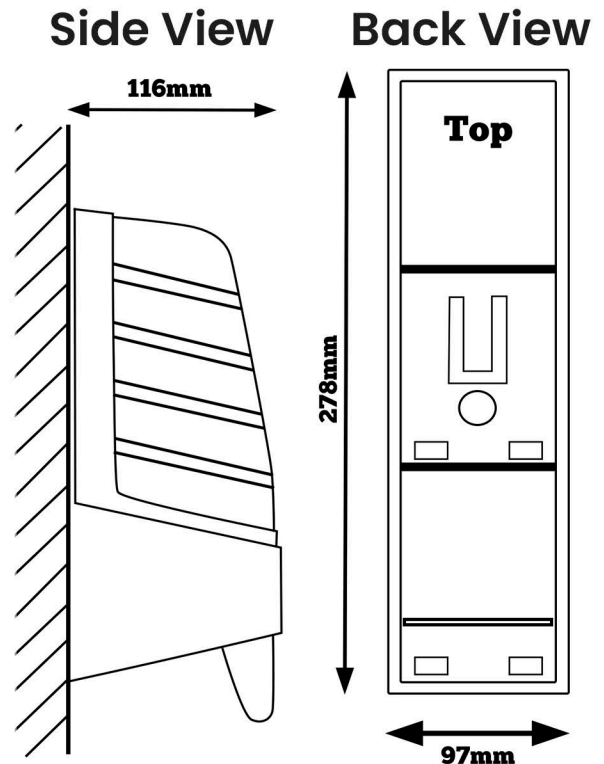
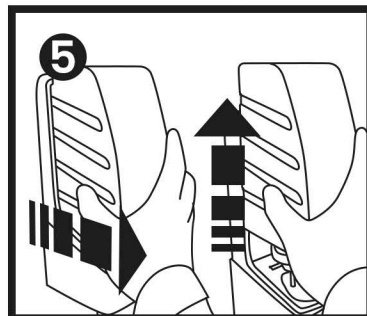
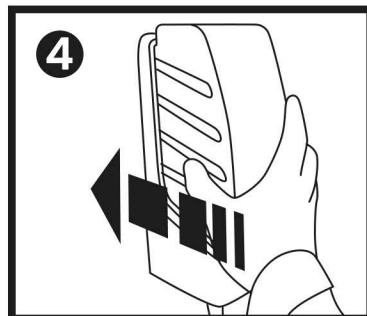
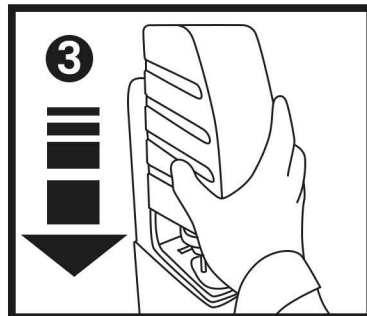
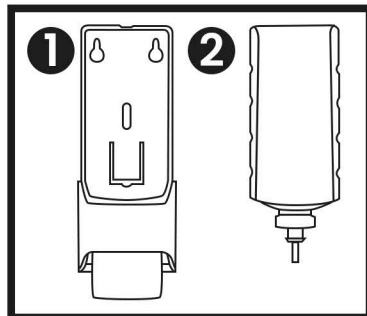
**2** Prepare the cartridge by removing the green cap and holding the cartridge with it's label facing away from you.

**3** Position the cartridge tip above dispenser opening then lower the cartridge so that it rests safely on the dispensers base.

**4** Simply push the cartridge forwards until it touches the back of the dispenser and 'clicks' into place.

With the cartridge secure and properly in place, it is now ready to use.

**5** To swap out the cartridge and refill the dispenser, follow steps 1 through 4 as shown up above but in reverse. Pull the cartridge instead of push, and lift instead of lower.



## SPECIFICATIONS

Product Code:	57111-NC
Num. of Applications:	3,000
Dispensed Formula:	Foam
Dispenser Capacity:	1,000mL (33.80 fl.oz)
Features:	Clean-tip Technology Closed-Loop System

## TECHNICAL DATA

L x W x H:	12.25in x 5.50in x 5.25in
Disp Weight:	1.00 lbs.
Pieces per Pack:	1 / 6
Pieces per Pallet:	648
Application Type:	Manual

Website: [www.soapopular.com](http://www.soapopular.com)  
E-mail: [info@soapopular.com](mailto:info@soapopular.com)