

# COVERED MANUAL WALLMOUNT DISPENSER

## Foaming Hand Dispenser

Prevent the spread of harmful germs & bacteria at the source by using our foam dispensers in your facilities. Offering 3,000 applications in-between refills, our dispenser provides consistent amounts of hand sanitizer where hand hygiene is needed.

## Highlights and Features

- Provides 3,000 applications in-between refills reducing downtime and maintenance.
- Foaming application is consistent and controlled to reduce messes and spills.
- Target high-traffic areas with our dispensers to reduce the spread and transmission of illness causing germs and bacteria at the source.
- Light-weight and easy to install using screws or adhesive tape for rapid implementation.
- Our dispenser is fully ADA Compliant, meeting the standards of one-handed operation.

## Clean-Tip Technology

Soapopular's No-Cover & Covered dispensers use our cartridge refill system, equipped with a foamer tip that pulls residual product back into the tip after every application to reduce wasteful leaks & spills.



## Consistent and Reliable



## Rich Foaming Formula

Foam offers 2.5x more applications per mL compared to gel and liquid alternatives.



## 3,000 Foam Applications

Our dispensers keep going, even through the busiest parts of the day with 3,000 applications.

Website: [www.soapopular.com](http://www.soapopular.com)

E-mail: [info@soapopular.com](mailto:info@soapopular.com)

# Wallmount Dispenser Instructions Using Adhesive Tape

**Caution:** It is the installer's responsibility to ensure that installation of this unit complies with all applicable standards, codes, and regulatory requirements. Do not install this dispenser above sources of heat or near any sources of ignition/flame.

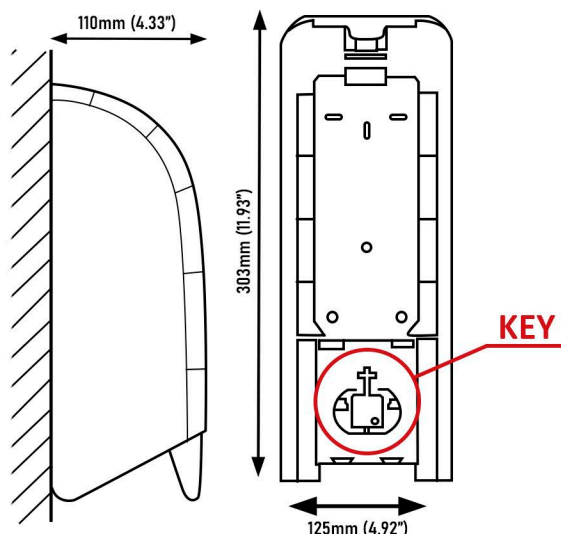
Mount unit only on dry, clean even wall parts or tiles. Do not install on moving furniture/objects (ie; doors) Do not install where the failure of mounting system, or dripping of product from hands may cause damage to equipment or create potential safety hazard.

Leave at least 2.00" of clearance above the wallplate to allow for easy bottle insertion & removal. Dispenser is dishwasher safe, top rack only, max water temp. 140F (60C).

Wall anchors provided with the dispenser are to be used with masonry surfaces such as brick, tiles, & concrete.

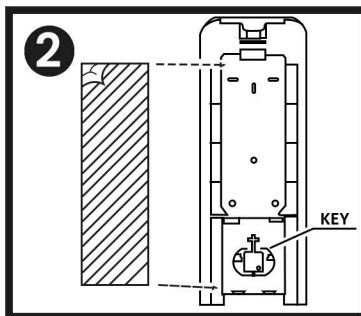
For surfaces other than masonry, the installer must use & select the appropriate fasteners. (i.e; zip plugs, and/or toggle bolts.)

## Wallplate Measurements



- 1 Use a flat, smooth surface to mount dispenser. First wipe the surface area with the included alcohol wipe.

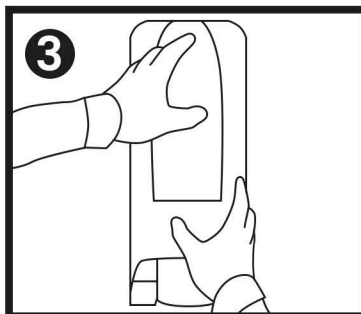
Ensure a thorough clean of the surface & let the area dry. **DO NOT** use brick or concrete surfaces with this mounting method.



- 2 Located on the back of the dispenser, are two square adhesive's with thin covers.

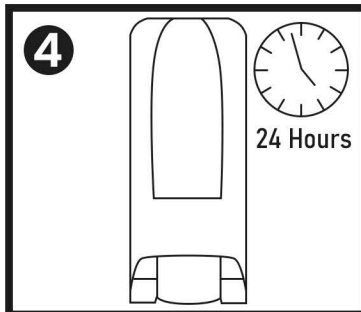
Peel back the thin covers to expose adhesive material underneath.

Remember to remove the key prior to installation.



- 3 Firmly press the dispenser against the flat surface in the same location that was cleaned with the alcohol wipe.

Continue to apply a firm pressure for 10 seconds.



- 4 **DO NOT** place cartridges in the dispenser until 24 hours have passed. This will allow the adhesive tape to solidify before weight is applied.

# Wallmount Dispenser Instructions

## Using Screws

**Caution:** It is the installer's responsibility to ensure that installation of this unit complies with all applicable standards, codes, and regulatory requirements. Do not install this dispenser above sources of heat or near any sources of ignition/flame.

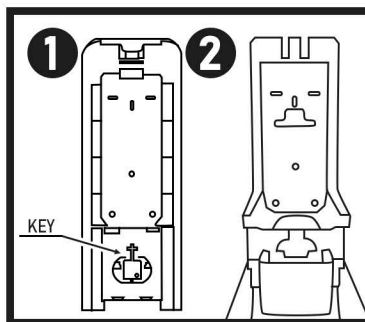
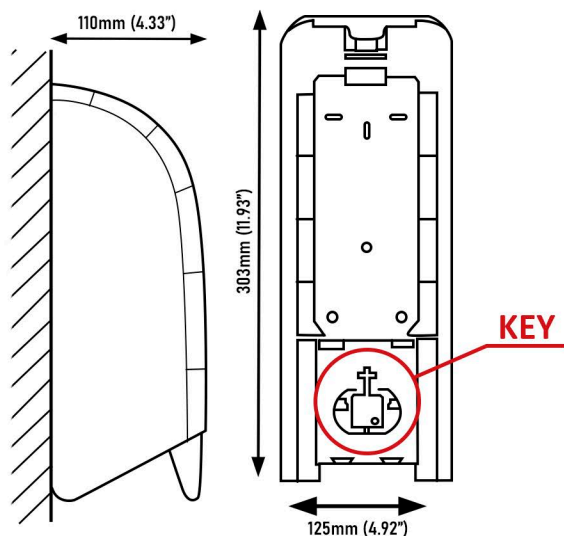
Mount unit only on dry, clean even wall parts or tiles. Do not install on moving furniture/objects (ie; doors) Do not install where the failure of mounting system, or dripping of product from hands may cause damage to equipment or create potential safety hazard.

Leave at least 2.00" of clearance above the wallplate to allow for easy bottle insertion & removal. Dispenser is dishwasher safe, top rack only, max water temp. 140F (60C).

Wall anchors provided with the dispenser are to be used with masonry surfaces such as brick, tiles, & concrete.

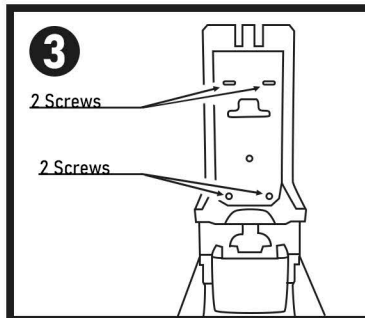
For surfaces other than masonry, the installer must use & select the appropriate fasteners. (i.e; zip plugs, and/or toggle bolts.)

## Wallplate Measurements



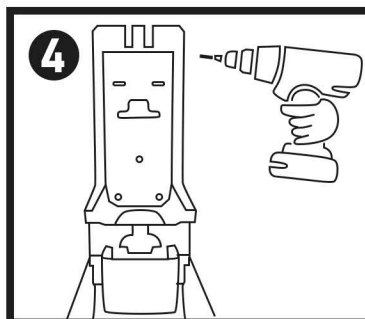
**1** REMOVE key from the backplate, use the key to open dispenser cover.

**2** With the dispenser cover now open, use backplate as a guide to align screw holes to the wall for final placement.



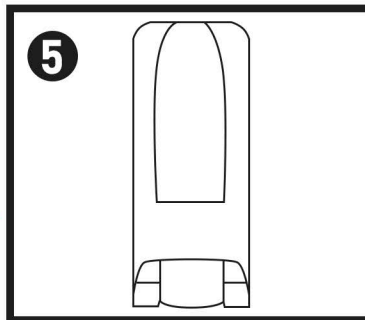
**3** Use the backplate as a guide to mark the screw locations for alignment of the prior to drilling.

4 provided screws will go in the marked holes shown in the diagram.



**4** The provided screws are designed for use with drywall, tile, and brick surfaces.

Use a 3/16" drill bit to create the holes for the screws and anchors to use, then drill the screw into each wallplate hole.



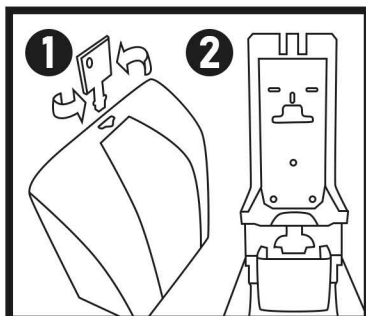
**5** Now that the backplate is firmly secured against the wall, the cartridge can be placed and the dispenser cover closed.



# Technical Data & Specifications

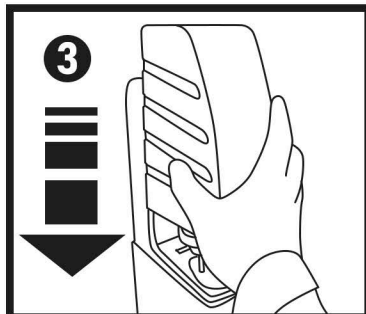
## Setup & Refill Instructions

**1** Take the dispenser key and place it into the keyhole on top of the dispenser & twist the key counter-clockwise or clockwise to open cover.



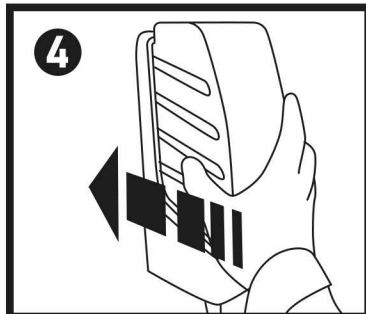
**2** With the cover open, grab a cartridge refill and prepare to place it into the dispenser.

**3** Position the cartridge tip above dispenser opening then lower the cartridge so that it rests safely on the dispensers base.

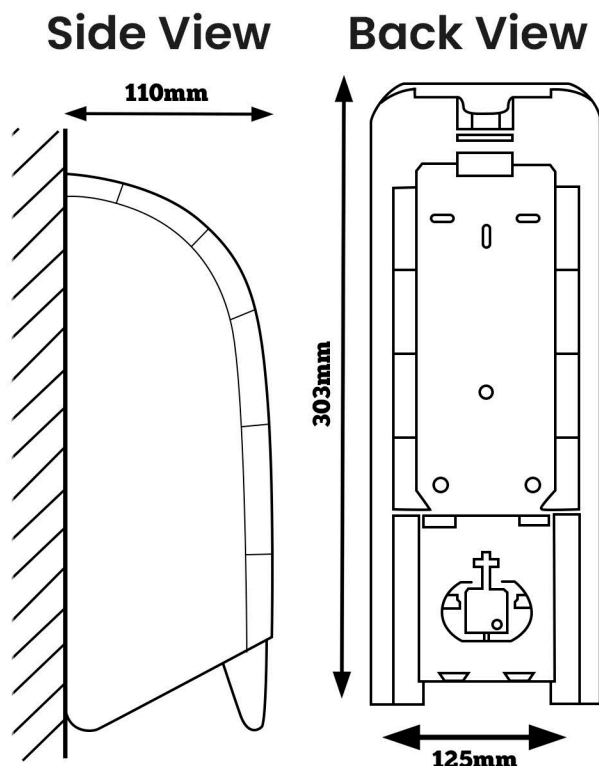
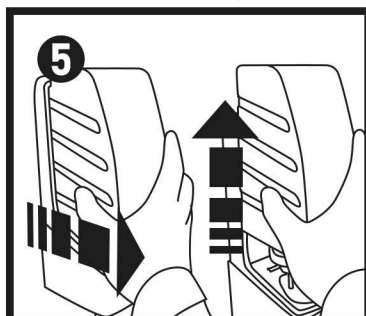


**4** Simply push the cartridge forwards until it touches the back of the dispenser and 'clicks' into place.

With the cartridge secure and properly in place, it is now ready to use.



**5** To swap out the cartridge and refill the dispenser, follow steps 1 through 4 as shown up above but in reverse. Pull the cartridge instead of push, and lift instead of lower.



## SPECIFICATIONS

Product Code:	57111
Num. of Applications:	3,000
Dispensed Formula:	Foam
Dispenser Capacity:	1,000mL (33.80 fl.oz)
Features:	Clean-tip Technology Closed-Loop System

## TECHNICAL DATA

L x W x H:	11.97in 4.92in x 4.33in
Disp Weight:	1.00 lbs.
Pieces per Pack:	1 / 6
Pieces per Pallet:	648
Application Type:	Manual

Website: [www.soapopular.com](http://www.soapopular.com)  
E-mail: [info@soapopular.com](mailto:info@soapopular.com)