

BULK-FILL 1L MANUAL WALLMOUNT DISPENSER

FOAMING HAND DISPENSER

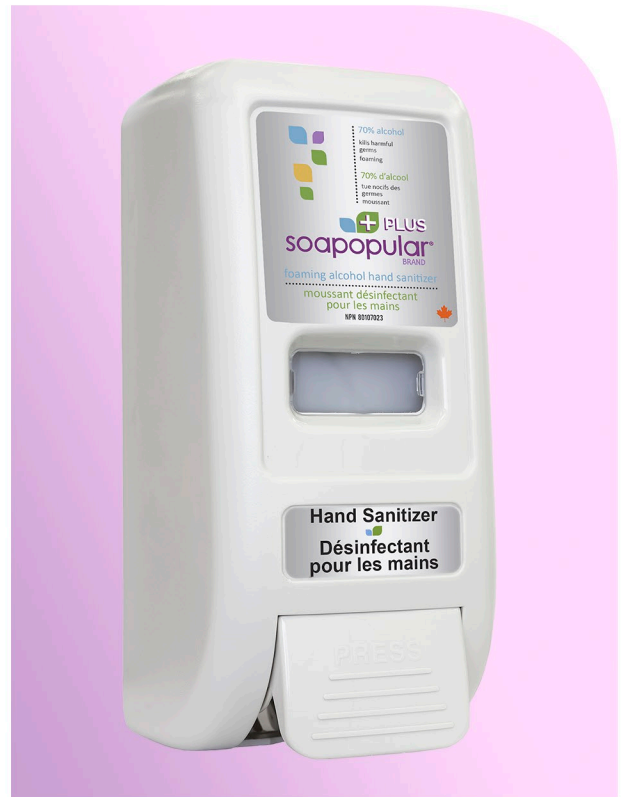
Prevent the spread of harmful germs & bacteria at the source by using our Foaming dispensers in your facilities. **With 2,600 applications between refills, our dispenser provides a controlled amount of foam formula** where hand hygiene is required.

HIGHLIGHTS & FEATURES

- Provides 2,600 applications inbetween refills reducing maintenance trips required.
- Foam pump dispenses consistent & controlled amounts of formula to reduce mess.
- Reduce pilferage on site with a protective cover using a button-lock to restrict access to authorized personnel only.
- Light-weight and sleek design allows easy installation using screws or adhesive tape.
- Fully ADA Compliant dispenser meeting one-handed operation standards.

BUTTON-LOCK DESIGN

Manual Dispenser is designed with a button-lock mechanism located at the bottom of the dispenser to prevent theft and damage to the product inside.



RICH FOAM FORMULA

Foam formula offers 2.5x more applications than gel and liquid.



2,600 APPLICATIONS

From start to finish, our dispenser applies a controlled amount of foam product.

Website: www.soapopular.com
E-mail: info@soapopular.com

DISPENSER MOUNTING INSTRUCTIONS - WITH TAPE

MOUNTING DISPENSER WITH TAPE

Caution: It is the installer's responsibility to ensure that installation of this unit complies with all applicable standards, codes, and regulatory requirements. Do not install this dispenser above sources of heat or near sources of ignition/flame.

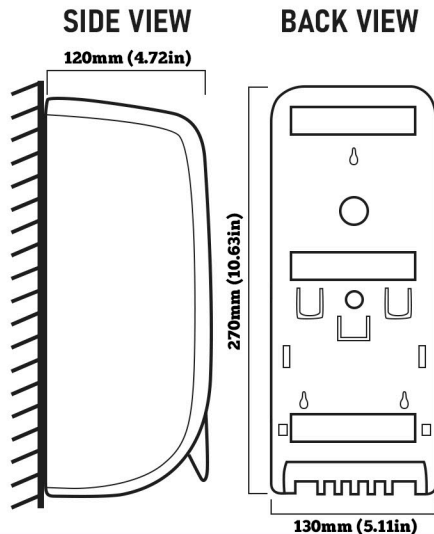
Mount unit only on dry, clean even wall parts or tiles. Do not install on moving furniture/objects (ie;doors) Do not install where a failure of mounting system, or dripping of product from hands may cause damage to equipment or create a potential safety hazard.

Leave at least 2" of clearance above the wallplate to allow for easy bottle insertion & removal.

Some tile surfaces have treatments that may inhibit adhesion of tape. Test adhesion against the tile before filling dispenser.

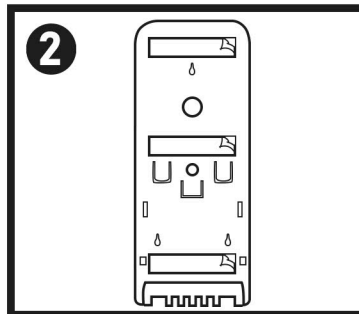
Do not use tape with concrete, brick, or masonry surfaces; surfaces that have a coating/chemical impregnation or porous surfaces.

DISPENSER MEASUREMENTS



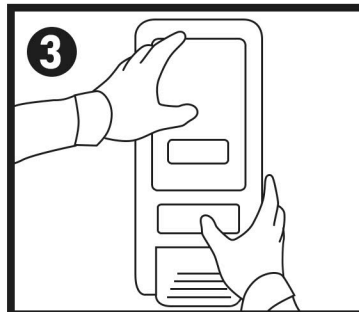
- 1** Find a flat & smooth surface to place the dispenser.

Ensure a thorough clean of the surface and let the area dry. **DO NOT** use on brick or concrete surfaces.



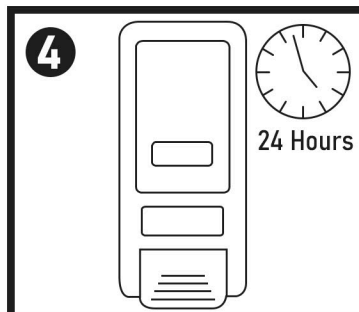
- 2** Peel the thin plastic cover protecting the tape on the back of the dispenser.

There are three long strips of double-sided adhesive tape on the backplate.



- 3** Place the dispenser on the cleaned flat wall and hold it for 10 seconds.

Continue to apply a firm pressure for 10 seconds.



- 4** **DO NOT** fill the dispenser with product until after 24 hours. This will allow the adhesion to solidify before weight is applied.

DISPENSER MOUNTING INSTRUCTIONS - WITH SCREWS

MOUNTING DISPENSER WITH SCREWS

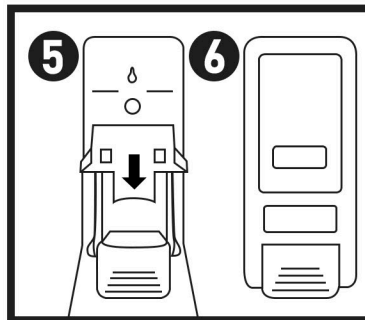
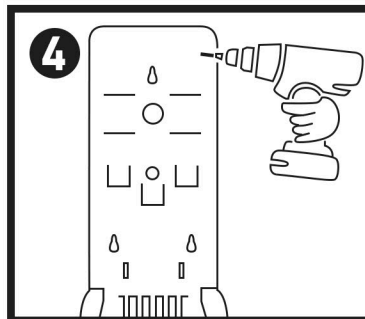
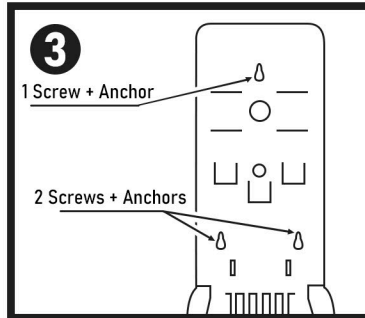
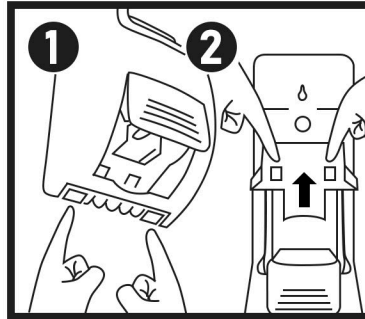
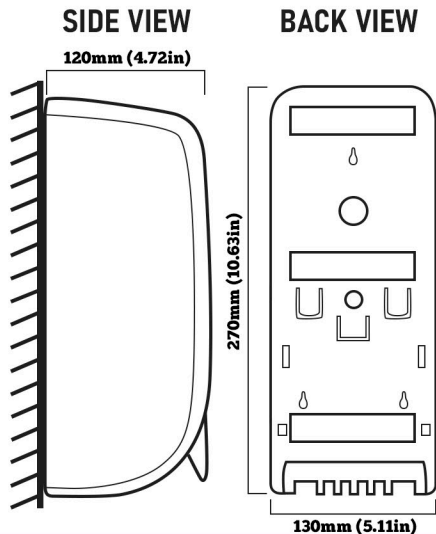
Caution: It is the installer's responsibility to ensure that installation of this unit complies with all applicable standards, codes, and regulatory requirements. Do not install this dispenser above sources of heat or near sources of ignition/flame.

Mount unit only on dry, clean even wall parts or tiles. Do not install on moving furniture/objects (ie;doors) Do not install where a failure of mounting system, or dripping of product from hands may cause damage to equipment or create a potential safety hazard.

Leave at least 2" of clearance above the wallplate to allow for easy bottle insertion & removal.

Wall anchors provided with the dispenser may be used with masonry surfaces such as brick, tiles, & concrete/drywall.

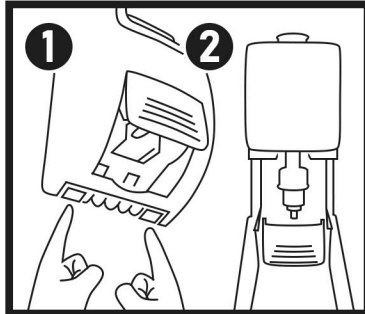
DISPENSER MEASUREMENTS



TECHNICAL DATA SPECIFICATIONS

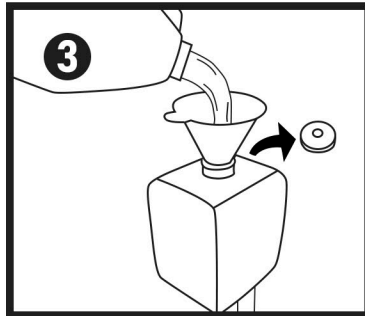
SETUP + REFILL INSTRUCTIONS

1 With the dispenser installed on a flat surface, press the lock buttons on the bottom of the dispenser, unlocking the protective cover.



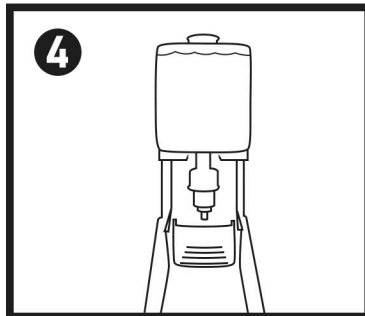
2 With the cover open, remove the bottle inside before the refilling can begin.

3 DO NOT refill the bottle when bottle is in the dispenser unit. Accidental spills can damage the dispenser. Refill with 4L (57400) product ONLY.



Recommend using a sterilized funnel to reduce spills. Take the cap off the bottle and pour product into the bottle until filled.

4 Put the top cap back onto the bottle. Take the full bottle and place it back in the dispenser.



See Diagram.1 Top right of this page to ensure proper installation.

Align pump with Lower U-Shape slot as shown in Diagram 1.

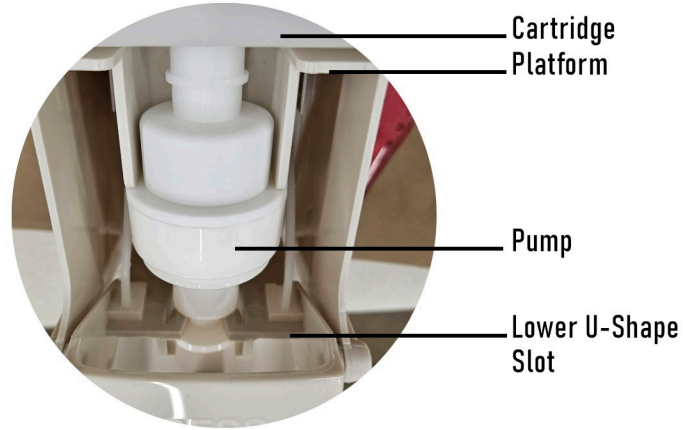
5 Close the protective cover by clicking it back into position.

PLEASE NOTE

Dispenser bottle and foam tip can be bought separately if a new replacement is required.

BOTTLE (68106-BL) **FOAM TIP** (68106-FM)

DIAGRAM.1



PARTS INCLUDED

- Dispenser (1)
- Screw & Anchor (3)
- Double Sided Tape (3)
- InstructionSheet (1)

SPECIFICATIONS

Product Code:	57106
Number of Applications:	2,600
Dispensed Formula:	FOAM
Dispenser Capacity:	1,000 (33.8 o.z)
Features:	Button Lock
USE 4L BULK-FILL (57400) TO FILL DISPENSER.	

TECHNICAL DATA

Length x Width x Height:	5.11in x 4.72in x 10.63in
Dispenser Weight:	1.50 lbs.
Pieces per Pack:	1
Pieces per Pallet:	288
Application Type:	MANUAL

Website: www.soapopular.com
 E-mail: info@soapopular.com