

PRODUCT CODE: 57002

# BULK-FILL AUTOMATIC WALLMOUNT DISPENSER

## FOAMING HAND DISPENSER

Prevent the spread of harmful germs & bacteria at the source by using our Foaming dispensers in your facilities. **With 2,600 applications between refills, our dispenser provides a controlled amount of foam formula** where hand hygiene is required.

### HIGHLIGHTS & FEATURES

- Provides 2,600 applications inbetween refills reducing maintenance trips required.
- Foam pump dispenses consistent & controlled amounts of formula to reduce mess.
- Reduce pilferage on site with a protective cover using a key-lock restricting access of the inner cartridge to staff/personnel only.
- Touchless dispenser uses infrared sensor to activate when users hand is under the unit.
- ADA Compliant dispenser in force and one-handed operation.

### KEY-LOCK DESIGN

Automatic Dispenser is designed with a key-lock mechanism to prevent theft and damage to the product inside.



**RICH FOAM FORMULA**



**2,600 APPLICATION**

Website: [www.soapopular.com](http://www.soapopular.com)  
E-mail: [info@soapopular.com](mailto:info@soapopular.com)

# DISPENSER MOUNTING INSTRUCTIONS

## MOUNTING DISPENSER WITH TAPE

**Caution:** It is the installer's responsibility to ensure that installation of this unit complies with all applicable standards, codes, and regulatory requirements. Do not install this dispenser above sources of heat or near sources of ignition/flame.

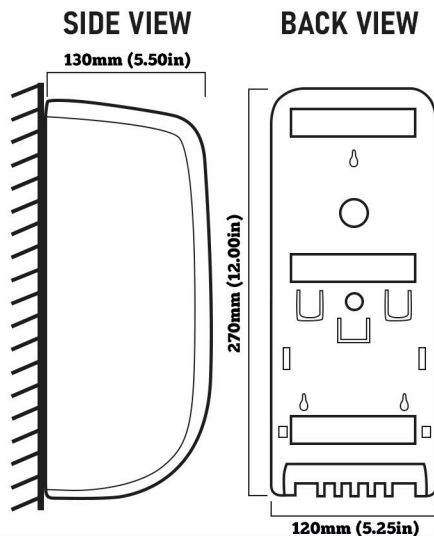
Mount unit only on dry, clean even wall parts or tiles. Do not install on moving furniture/objects (ie;doors) Do not install where a failure of mounting system, or dripping of product from hands may cause damage to equipment or create a potential safety hazard.

Leave at least 2" of clearance above the wallplate to allow for easy bottle insertion & removal. Dispenser is dishwasher safe, top rack only, max water temp. 140F (60C).

Some tile surfaces have treatments that may inhibit adhesion of tape. Test adhesion against the tile before filling dispenser.

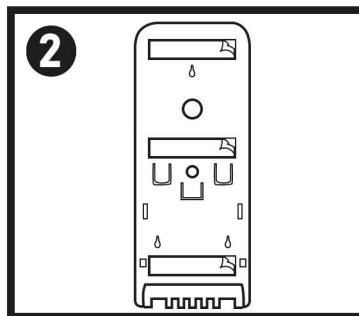
Do not use tape with concrete, brick, or masonry surfaces; surfaces that have a coating/chemical impregnation or porous surfaces.

## DISPENSER MEASUREMENTS



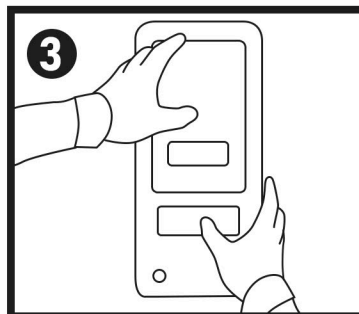
- 1 Find a flat & smooth surface to place the dispenser. First wipe the surface area with the included alcohol wipe.

Ensure a thorough clean of the surface and let the area dry. **DO NOT** use brick or concrete surfaces.



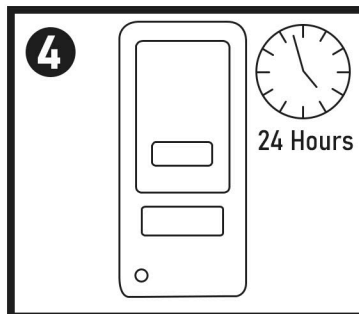
- 2 Peel the thin plastic cover protecting the tape on the back of the dispenser.

There are three long strips of double-sided adhesive tape on the backplate.



- 3 Place the dispenser on the cleaned flat wall and hold it for 10 seconds.

Continue to apply a firm pressure for 10 seconds.



- 4 **DO NOT** fill the dispenser with product until after 24 hours. This will allow the adhesion to solidify before weight is applied.

# DISPENSER MOUNTING INSTRUCTIONS

## MOUNTING DISPENSER WITH SCREWS

**Caution:** It is the installer's responsibility to ensure that installation of this unit complies with all applicable standards, codes, and regulatory requirements. Do not install this dispenser above sources of heat or near sources of ignition/flame.

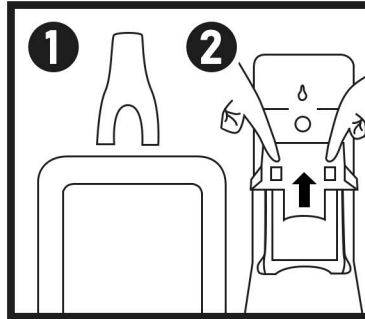
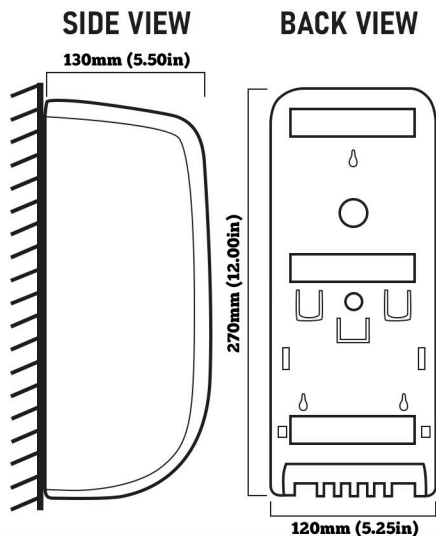
Mount unit only on dry, clean even wall parts or tiles. Do not install on moving furniture/objects (ie;doors) Do not install where a failure of mounting system, or dripping of product from hands may cause damage to equipment or create a potential safety hazard.

Leave at least 2" of clearance above the wallplate to allow for easy bottle insertion & removal. Dispenser is dishwasher safe, top rack only, max water temp. 140F (60C).

Wall anchors provided with the dispenser are to be used used with masonry surfaces such as brick, tiles, & concrete.

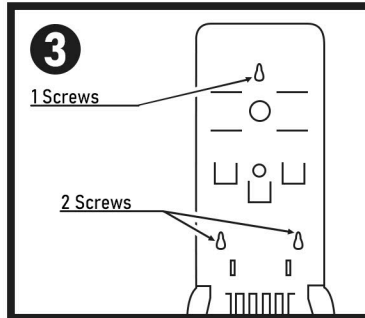
For surfaces other than masonry, the installer must use and select the appropriate fasteners. (i.e; zip plugs, and/or toggle bolts.)

## DISPENSER MEASUREMENTS



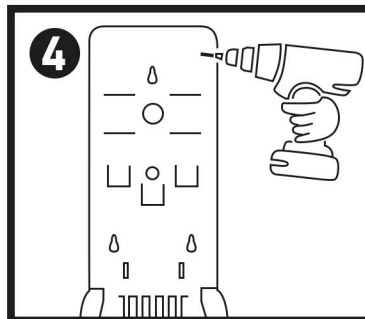
**1** Open the protective cover by using the dispenser key and applying pressure to the slots on top of the dispenser.

**2** Push the two tabs located on the backplate to release the bottle mount. Slide the bottle mount up to expose the two screw holes in the backplate.



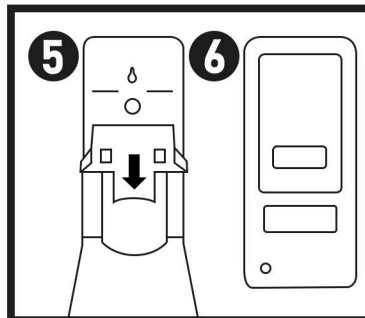
**3** The 3 screws provided will go in the marked holes shown in the diagram.

Ensure proper alignment of dispenser before using the screws.



**4** Screws provided are meant to be used on brick & concrete surfaces. Other surfaces used require different wall anchors.

Use a 3/16" drill bit to mount the back plate to the wall.



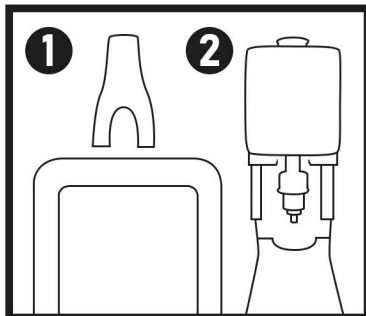
**5** Take the bottle mount & push it against the backplate, slide down until the mount clicks into place.

**6** Close the protective cover to complete installation.

# TECHNICAL DATA SPECIFICATIONS

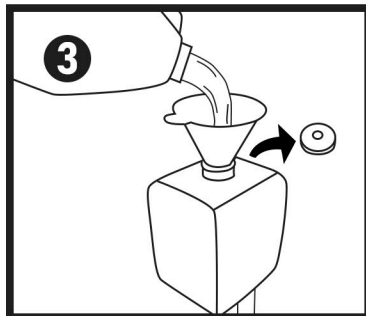
## SETUP + REFILL INSTRUCTIONS

**1** Use the dispenser key to open the front cover by applying pressure in the two slots on top of the dispenser.



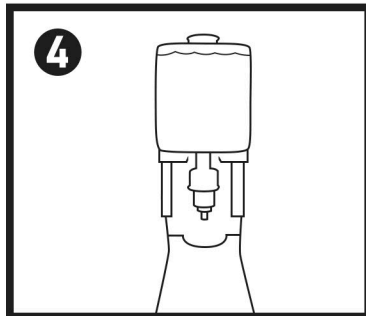
**2** With the cover open, remove the bottle inside before the refilling can begin.

**3** First remove the cap from the top of the bottle. It is highly recommended that you use a funnel to refill the bottle to reduce accidental spills.

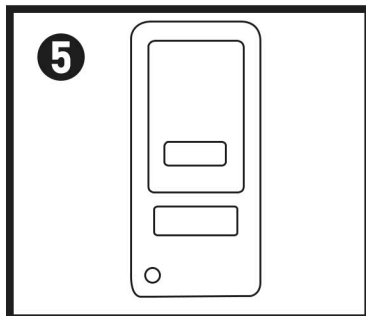


Take a 4L jug of Soapopular products and pour it into the top hole until full.

**4** Put the top cap back onto the bottle. Take the full bottle and place it back in the dispenser.

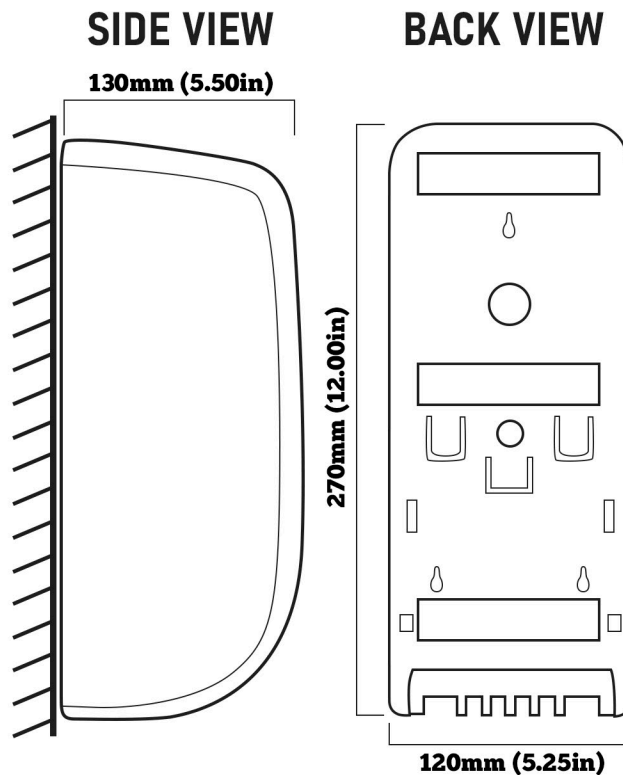


**5** Close the protective cover by clicking it back into position. The dispenser is now ready to use.



**\*PLEASE NOTE\***

Dispenser bottle and pump tip can be bought separately if a new replacement is required.



SPECIFICATIONS	
Product Code:	57002
Number of Applications:	2,600
Dispensed Formula:	FOAM
Dispenser Capacity:	1,000 (34 o.z)
TECHNICAL DATA	
Length x Width x Height:	12.00in x 5.25in x 5.50in
Dispenser Weight:	2.50 lbs.
Pieces per Pack:	1
Pieces per Pallet:	288
Pieces per Pallet:	288

Website: [www.soapopular.com](http://www.soapopular.com)  
E-mail: [info@soapopular.com](mailto:info@soapopular.com)